

**Boston
Scientific**

LATITUDE™ NXT

Patient Management System





LATITUDE™ NXT PATIENT MANAGEMENT SYSTEM *and* YOU

YOU RECEIVED AN IMPLANTED PACEMAKER OR DEFIBRILLATOR TO TREAT YOUR SLOW OR IRREGULAR HEART RHYTHM. Your device is designed to help you resume regular daily activities. It monitors your heart rate, beat by beat, and provides therapy when you need it. Your doctor will schedule regular follow-up visits to check your device and overall health.

In addition, your doctor has prescribed the LATITUDE NXT Patient Management System to work with your implanted device between scheduled visits. The LATITUDE NXT Patient Management System is an in-home monitoring system that gives your healthcare team access to information from your implanted device.

The LATITUDE™ Communicator checks your implanted device in the convenience of your home and sends information to a secure website that your healthcare team can view.

THE LATITUDE™ COMMUNICATOR

Please set up your LATITUDE Communicator as soon as you receive it. The Communicator is a simple, easy to use tool that does not change your way of life and allows you to become more connected to your healthcare team.

The Communicator:

- Checks your implanted device at regularly scheduled times set by your healthcare provider.
- Uses wireless technology to communicate with your implanted device.
- Does not provide continuous monitoring and is not a medical emergency system.
- Does not reprogram or change any device function.

EASY SET-UP

1. Plug your Communicator to a power outlet and install the connectivity option provided with the Communicator (cellular, ethernet).
2. When the Heart button flashes (this may happen more than once), press and release it to start the setup process.
3. Stay within arm's reach of your Communicator until all the waves are lit a solid green, confirming that your implanted device data was successfully sent to the Latitude website.



FOR PATIENTS WITH AN ICD, CRT-D, CRT-P, PACEMAKER¹:

What You Need to Know

- To ensure timely data collection, place the LATITUDE™ Communicator near your bed or in a room where you spend time during the day.
- The Communicator sends important information from your implanted device automatically, based on a schedule set by your doctor. This information is sent to the secure LATITUDE website for your doctor to review.
- The Communicator collects information from your implanted device as often as every day. For this reason, we recommend you leave your Communicator plugged in at all times.
- You won't feel anything or see any indication on the Communicator when your implanted device is being checked.

FOR PATIENTS WITH AN S-ICD²: *What You Need to Know*

The Heart button will flash when it is time to send information from your EMBLEM™ S-ICD. When you see the Heart button flash:

- Press and release the flashing Heart button.
- Stay within arm's reach of your Communicator until all the waves are lit a solid green, indicating that the data collection is complete. This may take several minutes.

¹ ICD: Implantable Cardioverter Defibrillator
CRT-D: Cardiac Resynchronization Therapy - Defibrillator
CRT-P: Cardiac Resynchronization Therapy - Pacemaker

² S-ICD: Subcutaneous Implantable Defibrillator



LATITUDE™ COMMUNICATOR CONNECTION OPTIONS

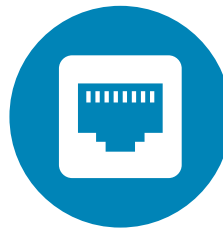
Your Communicator can send data to your clinic via a cellular network or over the internet via Ethernet. Only one connection method is needed. If you need a cellular or Ethernet adapter please call Boston Scientific Patient Services at (+61) 1800 528 488 (Australia) or (+64) 0508 200 886 (New Zealand) to order.

Hours are Monday-Friday, 9 am to 5 pm AEST/AEDT

Cellular



Ethernet



ADDITIONAL RESOURCES

Please visit www.bostonscientific.com/latitudepatient if you or your family have questions about:

Set-up or operation of the LATITUDE Communicator

Communicator connection options

Device related questions

Traveling with your Communicator

In addition, Boston Scientific Patient Services is available by calling (+61) 1800 528 488 (Australia) or (+64) 0508 200 886 (New Zealand)
Hours are Monday-Friday, 9 am to 5 pm AEST/AEDT

ALWAYS READ THE LABEL AND FOLLOW THE DIRECTIONS FOR USE.

Indications, contraindications, warnings and instructions for use can be found in the product labeling supplied with each device. Prior to use, please review the Directions for Use (DFU) for full operating instructions.

CAUTION: The law restricts these devices to sale by or on the order of a physician. Indications, contraindications, warnings and instructions for use can be found in the product labeling supplied with each device or at www.IFU-BSCI.com. Products shown for INFORMATION purposes only.

2023 ©Copyright Boston Scientific Corporation or its affiliates. All rights reserved. All trademarks are the property of their respective owners. All trademarks are the property of their respective owners.

**Boston
Scientific**
Advancing science for life™